

High Quality Motor



High Air Volume



Energy-efficient

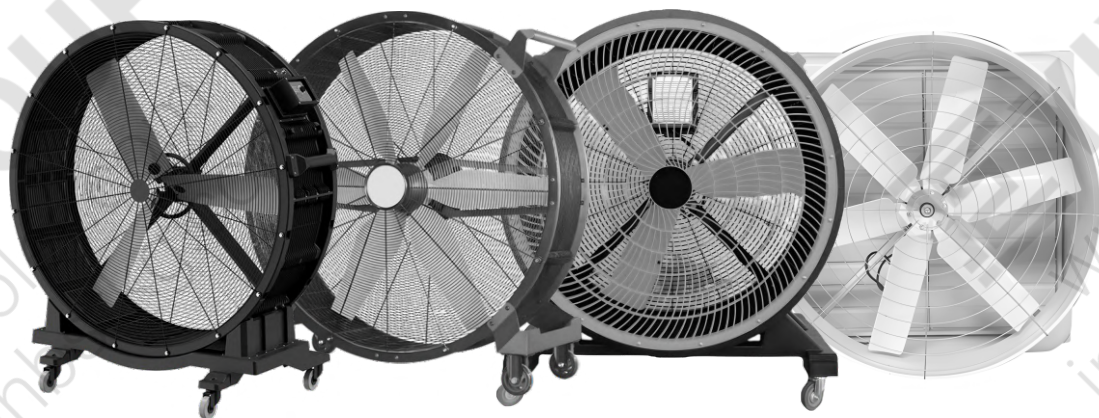


Low Noise

YiYi Group Ventilation Series

www.yiyicooler.com

industrial@nbstkg.com



> HVLS Fans



- ◆ Standard general safety frame, compatible with most common industrial building structures.
- ◆ Asynchronous motor large torque, bring more relaxed and stable large air output fan blade.
- ◆ Blade handle flexible connection, release high-frequency vibration, long-term operation without metal fatigue.
- ◆ In line with CC, CE, UL and other international standards, key components have passed through safety testing.
- ◆ Industrial safety product requirements, it can operate stably in harsh environments for a long time.

As the earlier model of HVLS fan, the product has been sold for more than ten years. equipped with German brand deceleration motor, large to rgue. Whole machine have safetyprotection, accessories Meet industry standards, suitable for a variety of harsh industrial applications.

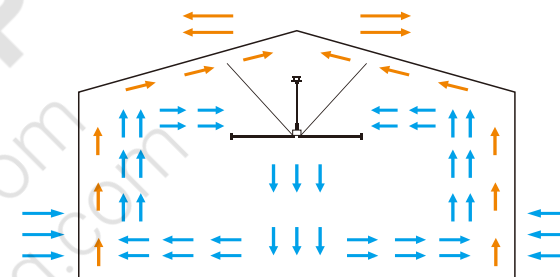
Model	Diameter	(RPM) Speed	Specification	(KG) Weight	(KW) Power	(m ³ /min) Air Volume	(DB) Noise	Number Of Blades	(M) Maximum Coverage
BS-7.3	7.3	50	24	106	1.5	14800	38	6/5	1200
BS-6.7	6.7	55	22	100	1.5	13700	38	6/5	1000
BS-6.1	6.1	60	20	94	1.5	12900	38	6/5	800
BS-5.5	5.5	65	18	72	1.5	12200	38	6/5	600

> PMSM Fans



- ◆ The PMSM motor is better suited for the quieter space, which has a small size and low noise.
- ◆ It has high torque, energy conservation and maintenance free.
- ◆ Multiple safety protection structural components can protect the overall safety of the fan.
- ◆ The vector variable frequency control system of multiple fault protection starts smoother and quieter.
- ◆ Equipped with variable cross-section streamline fan blades, it is more balanced air flow during operation.

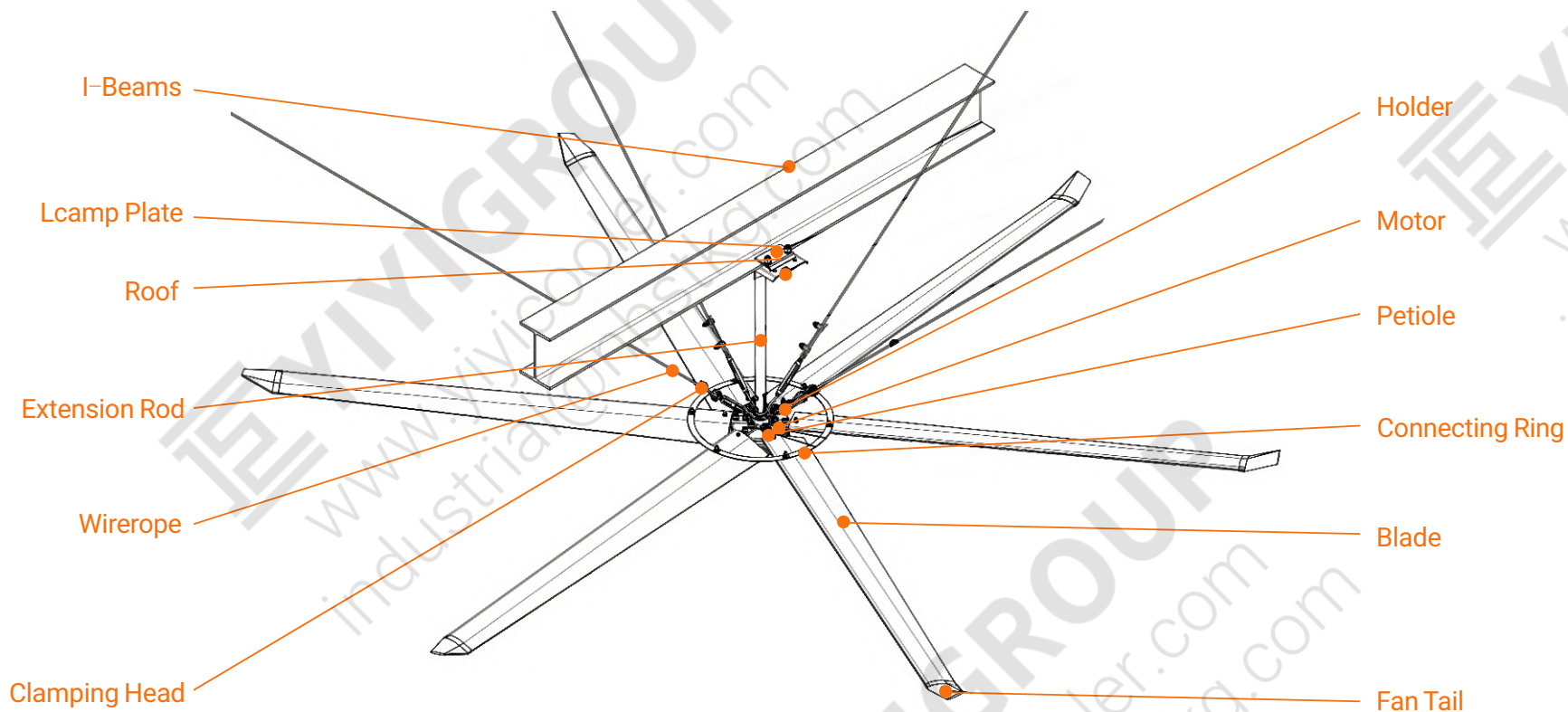
Working Principle



The PMSM ceiling fan features an industrial-grade safety structure and is equipped with a PMSM permanent magnet brushless synchronous motor. This combination ensures safety, quiet operation, compact size, and maintenance-free performance, making it a high-quality, industrial large ceiling fan.

Model	Diameter	(RPM) Speed	Specification	(KG) Weight	(KW) Power	(m ³ /min) Air Volume	(DB) Noise	Number Of Blades	(M) Maximum Coverage
BS-7.3	7.3	60	24	106	1.3/1.5/1.8	14800	38	6/5	1200
BS-6.1	6.1	60	20	94	1.0	12900	38	6/5	850
BS-5.5	5.5	65	18	72	0.75	12200	38	6/5	700
BS-5.0	5.0	70	16	68	0.7	11500	38	6/5	600
BH-4.2	4.2	75	14	64	0.6	10600	38	6/5	400

Structural Schematic Diagram of an HVLS Fan



Installation Methods



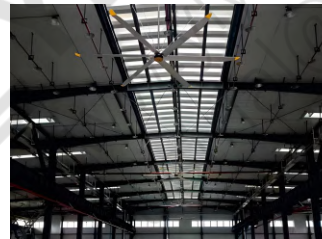
I-beam Structure



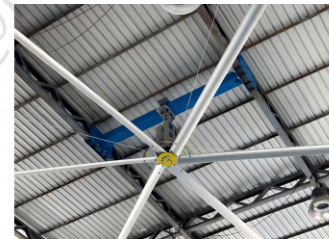
Concrete Structure



Circular Tube Structure



Angle Steel Structure

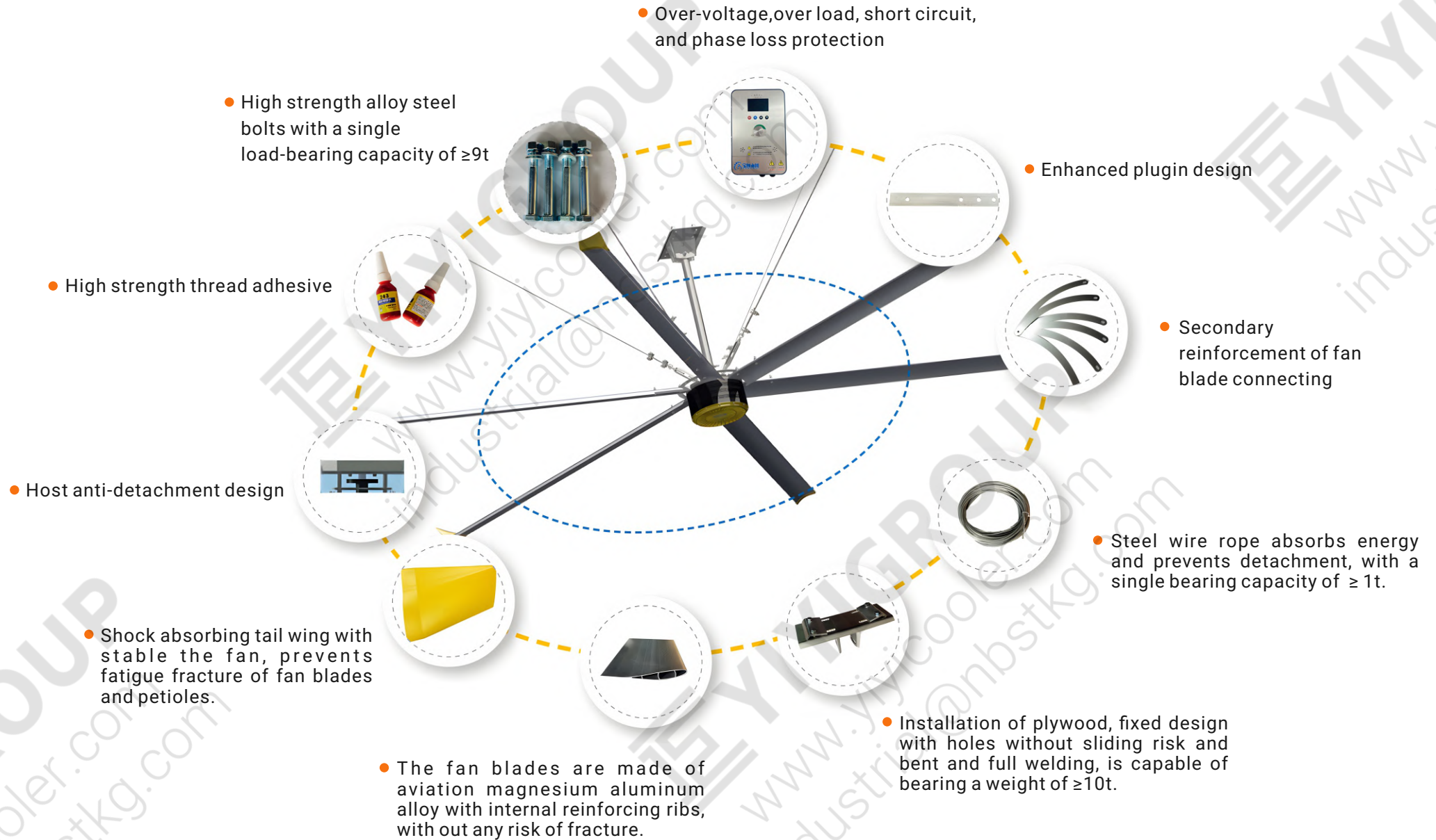


Clamp Square Tube

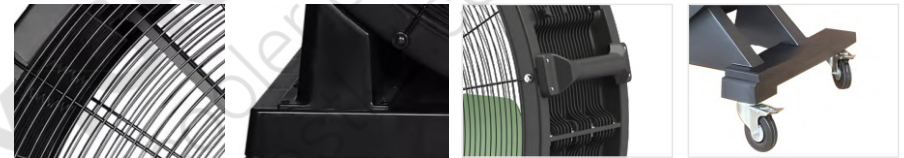


Others

Accessories



> YBS Series



Model	Diameter	(RPM) Speed	(KG) Weight	(KW) Power	(m ³ /min) Air Volume	Number Of Blades
YBS-1.5	1.2	440	60	0.6	633	3

- ◆ Input power 0.6KW, suitable for 180V-260V, air supply distance 35-40m, applicable area of 400m²-500m².
- ◆ The motor temperature can be 20°C during operation, and the motor temperature rise limit is 120°C.
- ◆ Two fans blow at close distance, the motor is not affected.
- ◆ The blade material is "Enhanced PP" material.

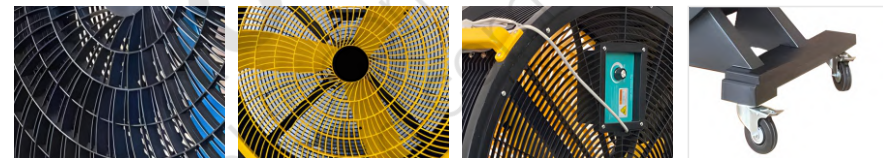
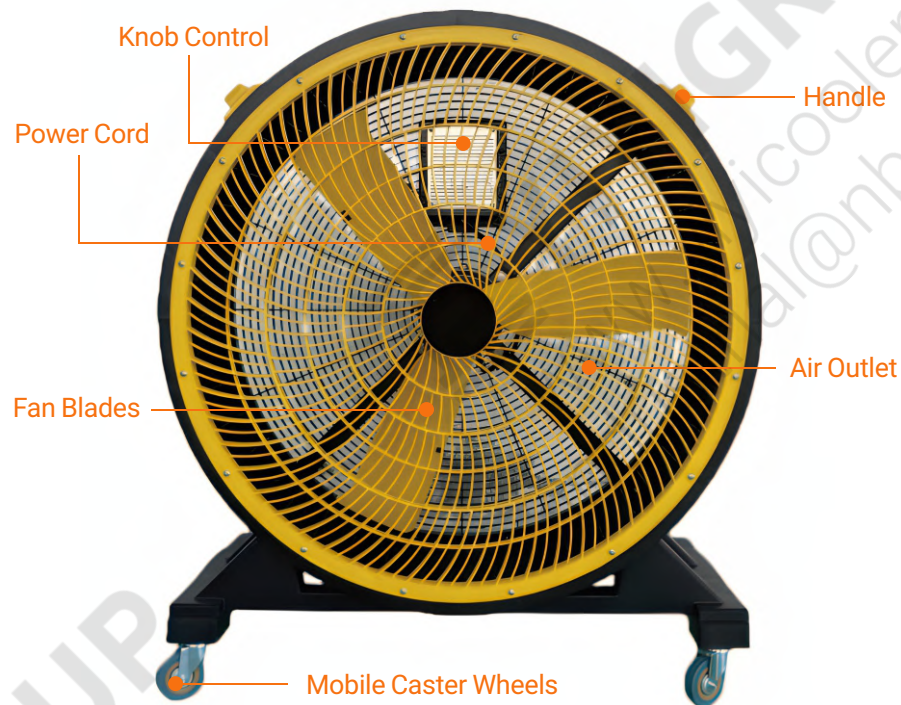
> YEF Series



Model	Voltage	Power	Control	Blade	Size (cm)	Packing Size	Net Weight
YEF3622	220V 50/60HZ	500W	7 Speed	36"-6 Blades (90CM)	102*45*108	107*46.5*107.5	42kg
YEF4222	220V 50/60HZ	550W	7 Speed	42"-6 Blades (105CM)	122*51.5*123	122*51.5*123	49kg
YEF4822	220V 50/60HZ	600W	7 Speed	48"-6 Blades (120CM)	137*51.5*137.5	137*51.5*137.5	55kg

- ◆ All models feature a 6-blade design, made with durable and lightweight reinforced nylon material.
- ◆ Equipped with a DC brushless permanent magnet variable frequency motor, maintenance-free, extending the product's lifespan.
- ◆ Multiple speed adjustments with convenient mechanical knobs for easy control.
- ◆ 550W high power significantly increases air output.
- ◆ Thickened wheel design with four 5-inch medium-duty caster wheels.

> YFJ Series



- ◆ One large fan is suitable for multiple occasions.
- ◆ The motor uses a permanent magnet step less speed regulation motor, providing powerful performance.
- ◆ Cools a large area of 200-300 square meters.
- ◆ Ultra-long air delivery distance of 35-40 meters.
- ◆ Rotational speed reaches up to 900 revolutions per minute, delivering strong wind power.

Voltage Frequency	Power	Blade Diameter	Maximum Speed	Air Volume	Air Supply Distance	Applicable Area	Weight	Size (cm)
220V/50HZ	400W	760 mm (30 inches)	900 RPM	25000 m ³ /h	35-40 m	200-300 m ²	20 kg	92*48*1070

> YY Series



Model	Size (cm)	RPM (Max)	Phase	Voltage (V)	Air Capacity (m ³ /h)	Power	Motor
YY-1270	146*146*127	540	3	380V/220V	36000	1.1	General Motors
YY-1280	146*146*128	900	3	220V	40000	1.5	Permanent Magnet Motor
YY-1280-900	146*146*128	900	3	220V	40000	1.5	Permanent Magnet Motor
YY-1280-730	146*146*128	730	3	220V	40000	1.5	Ordinary Class 8 motor

- ◆ Combining the functions of ventilation, air exchange, and cooling, can speed up the number of air exchanges in factories and workshops, and improve the comfort and air cleanliness of workshops.
- ◆ Significant energy saving, power consumption is only about 10% to 15% of the traditional air conditioning.
- ◆ It can quickly exhaust the turbid, stuffy, and smelly indoor air to the outdoors. 4. it can effectively control the indoor environment and improve the comfort and cleanliness of the air.
- ◆ Can reduce the occurrence of infectious diseases, and effectively prevent the spread of viruses such as sudden influenza and other large areas, so that staff can work in a comfortable, safe, and secure environment.

Technical Advantages

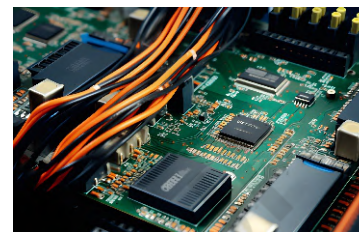
Personalized Customization

The intelligent centralized control system is specially designed for facilitating the simultaneous control and management of multiple ceiling fans, especially suitable for large factory buildings, logistics warehouses, and other places. Intelligent control includes centralized control, remote control, timing function, automatic temperature and humidity control .etc.



Control Technology

The control box is an industrial fan customized control system that achieves functions such as switch control and wind speed adjustment. Monitor real-time data, and provide intelligent protection for fan over voltage, overload, short circuit, phase loss, and vibration.



Motor Technology

The PMSM motor has characteristics of ultra-low torque ripple, no transmission loss, low noise, and maintenance free. Its torque can reach 280N·m, providing stronger, more stable driving force and longer service life.



Fan Blade Technology

The fan blade, with variable section streamline and high-strength aviation magnesium aluminum alloy, its surface is anodized with silver white with strong corrosion resistance. The stiffeners are connected inside the fan blade to avoid the droop of the fan blade and the fatigue loss of the connecting components when the fan is running.



Application Cases

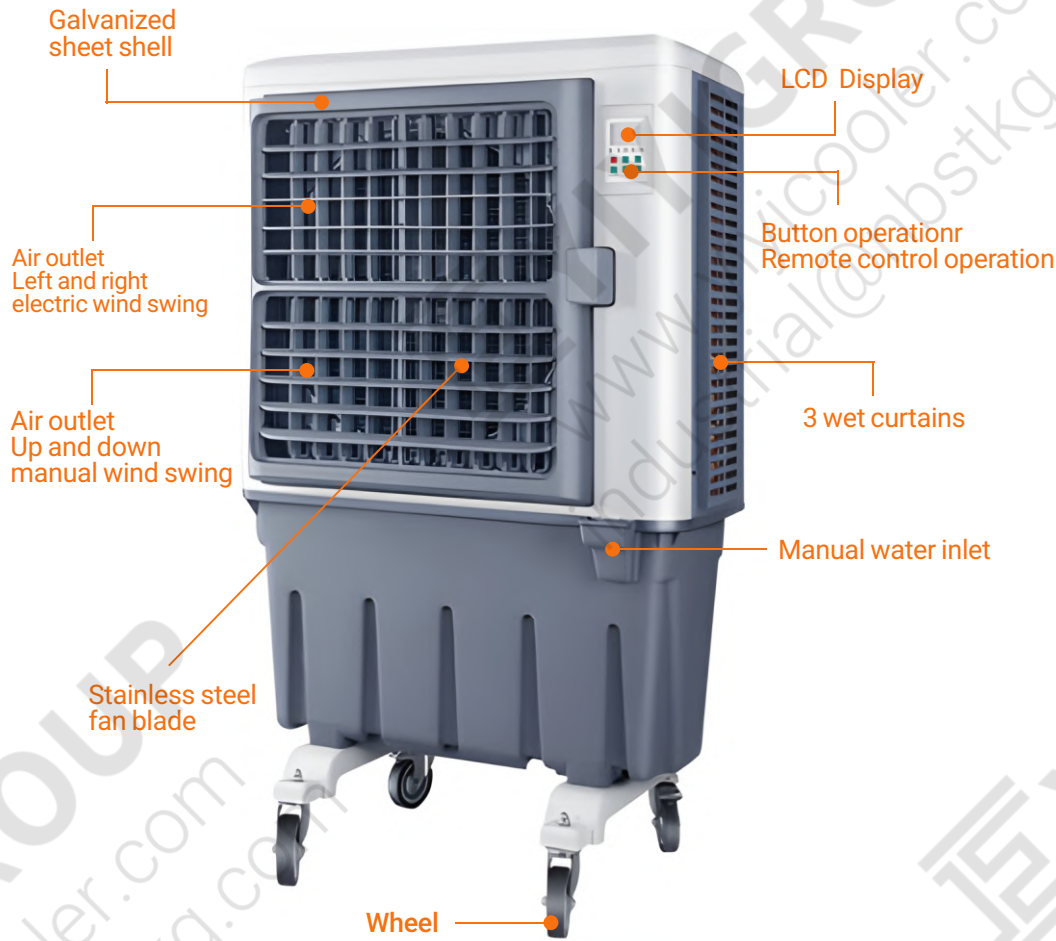
The wind speed generated by the "big fan" is 1-4 meters/second (making people feel the cooling effect of 3-8°C, which is calculated according to the air flow over the human skin to produce the best cool feeling.

The effect of cool comfort is not only achieved by cooling; A fan blowing through the skin speeds up the evaporation of sweat and can also create a cool feeling. The blowing area of the fan mainly depends on the speed, blade and diameter, and has a multiplier relationship with the diameter, The low-speed, large-diameter industrial fan is developed based on this principle and is a "artifact" for ventilation in tall buildings.



Portable Air Cooler

> YKT-1E-3N



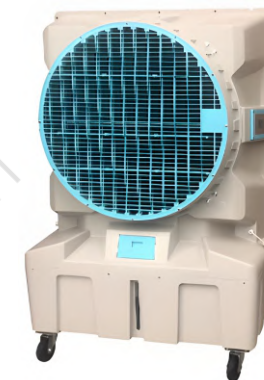
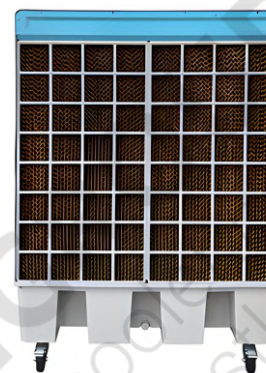
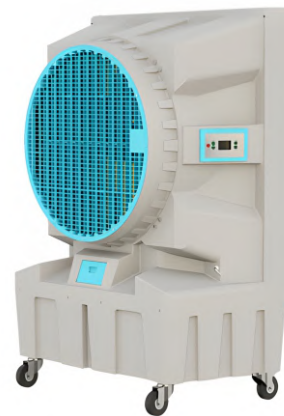
Voltage	(W) Power	Water Consumption	Water Tank	Air Volume (m³/h)	Applicable Area (m²)	Weight (KG)	External Dimensions (CM)
220V/50HZ	290	6-8L/H	60L	7200	50-70	35	89*49*140

> YKT-24N



Voltage	(W) Power	Water Consumption	Water Tank	Air Volume (m ³ /h)	Applicable Area (m ²)	Weight (KG)	External Dimensions (CM)
220V/ 50HZ	440	8-10L/H	70L	12000	80-100	43	92.5*58*144.4

> YKT-30



Voltage	(W) Power	Water Consumption	Water Tank	Air Volume (m³/h)	Applicable Area (m²)	Weight (KG)	External Dimensions (CM)
220V/50HZ	1100	15-20L/H	130L	18000	150-200	50	112*64*160

YiYi Group Ventilation Series

www.yiyicooler.com

industrial@nbstkg.com



Ningbo YiYi Network Technology Group Co., Ltd.